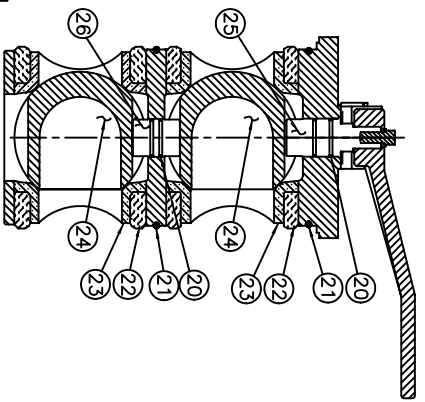
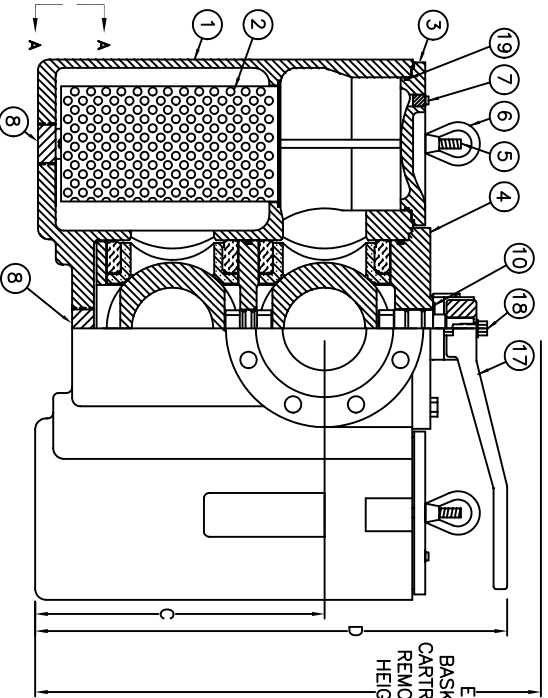
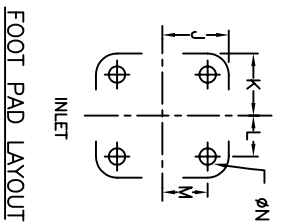
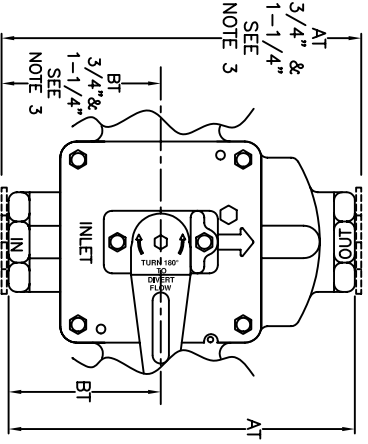
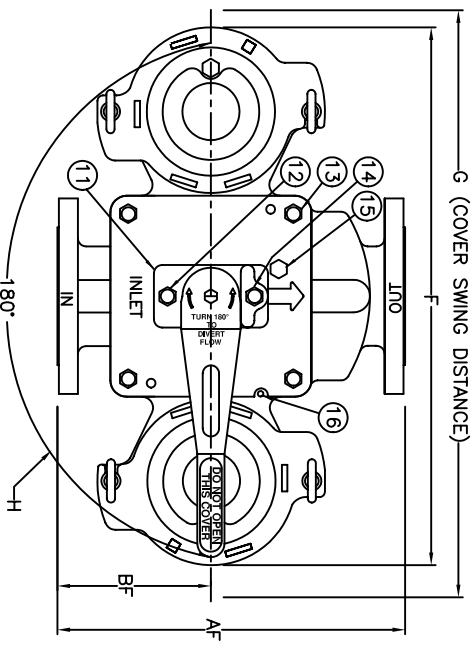


PIPE SIZE (NOMINAL) IN. MM.	DIMENSIONS												STRAINER WEIGHT LBS. KGS.	STRAINER PART NO.			
	AF±0.13 IN. MM.	BF IN. MM.	AT±0.13 IN. MM.	BT IN. MM.	C IN. MM.	D IN. MM.	E IN. MM.	F IN. MM.	G IN. MM.	H IN. MM.	J IN. MM.	K IN. MM.			L IN. MM.	M IN. MM.	N IN. MM.
3/4 (20)			6.13 / 156	2.94 / 72	5.00 / 127	10.50 / 267	13.38 / 340	10.50 / 268	16.50 / 419	7.88 / 200	3.25 / 83	2.13 / 54	1.63 / 41	2.75 / 70	3/8 (10)	41 / 19	ST053007BT22A
1 (25)			5.50 / 140	2.53 / 64	5.00 / 127	10.50 / 267	13.38 / 340	10.50 / 268	16.50 / 419	7.88 / 200	3.25 / 83	2.13 / 54	1.63 / 41	2.75 / 70	3/8 (10)	39 / 18	ST053010BT22A
1 (25)			6.88 / 175	3.19 / 81	5.00 / 127	10.50 / 267	13.38 / 340	10.50 / 268	16.50 / 419	7.88 / 200	3.25 / 83	2.13 / 54	1.63 / 41	2.75 / 70	3/8 (10)	45 / 20	ST053010BR22A
1-1/4 (32)			8.75 / 222	3.75 / 95	6.81 / 173	12.75 / 324	17.00 / 432	13.25 / 330	19.88 / 505	7.88 / 200	3.25 / 83	2.13 / 54	1.63 / 41	2.75 / 70	3/8 (10)	89 / 40	ST053012BT22A
1-1/2 (40)			7.50 / 190	3.25 / 83	6.81 / 173	12.75 / 324	17.00 / 432	13.25 / 330	19.88 / 505	7.88 / 200	3.25 / 83	2.13 / 54	1.63 / 41	2.75 / 70	3/8 (10)	86 / 39	ST053015BT22A
2 (50)			9.38 / 238	4.31 / 109	6.81 / 173	12.75 / 324	17.00 / 432	13.25 / 330	19.88 / 505	7.88 / 200	3.25 / 83	2.13 / 54	1.63 / 41	2.75 / 70	3/8 (10)	97 / 44	ST053015BR22A
2 (50)																	ST053020BT22A
2 (50)			10.63 / 270	4.63 / 117													ST053020BR22A
2-1/2 (65)			10.00 / 254	4.50 / 114													ST053025BT22A
2-1/2 (65)			10.75 / 273	4.69 / 119													ST053025BR22A
3 (80)			13.50 / 343	5.93 / 151													ST053030BR22A
4 (100)			16.00 / 406	7.06 / 179													ST053040BR22A



ITEM	PART NAME	MATERIAL	QTY.
1	BODY	STAINLESS ST. A351 CF8M	1
2	BASKET	STAINLESS STEEL, 316	2
	PERF. DIA.		
	MESH SIZE		
3	COVER	STAINLESS ST. A351 CF8M	2
4	CARTRIDGE	STAINLESS ST. A351 CF8M	1
5	STUD	CARBON STEEL	4
6	EYENUT	CARBON STEEL	4
7	PIPE PLUG	STAINLESS STEEL	2, 3, 2
8	WASHER	STAINLESS STEEL	1
9	STEM RETAINER	STAINLESS STEEL	1
10	CAP SCREW	CARBON STEEL	1, 4, 1
11	VENT VALVE	STAINLESS STEEL	1
12	PIN	CARBON STEEL	1
13	HANDLE	DUCTILE IRON/CARBON STEEL	1
14	CAP SCREW	CARBON STEEL	1
15	O-RING	VITON	2, 4, 2
16	SEAL	VITON	4
17	SEAT	TEFLON	4
18	BALL	STAINLESS STEEL	2
19	STEM	STAINLESS STEEL	1, 1

NOTES:
 1. INLET/OUTLET CONNECTIONS PER ANSI STANDARDS.
 2. MAX. WORKING PRESSURE: 200 PSI @ 150° F (13.8 BAR @ 65.5°C)
 3. BUSHINGS USED FOR 3/4" & 1-1/4" CONNECTIONS.
 (▲ - SPARES)

ELECTRONIC FILE NAME: SD053084.DWG
 REF. ECR D507 DATE 11/1/05

UNAUTHORIZED USE, MANUFACTURE OR REPRODUCTION IN WHOLE OR IN PART IS PROHIBITED. DRAWING, DESIGN AND OTHER DISCLOSURES PROPERTY OF EATON FILTRATION, LLC

EATON

900 FAIRMOUNT AVENUE, ELIZABETH, NEW JERSEY 07207

EATON FILTRATION, LLC

NAME MODEL 53 "BTX" - DUPLEX STRAINER
 ANSI CLASS 150 RF FLANGE & NPT
 SIZES 3/4" THROUGH 4" STAINLESS STEEL

DATE 12/16/99 CERT. WB DATE 12/16/99

SIZE DWG NO. A

SD053084

REV H